

## GIS SERVICES

- Data Conversion
- GPS Data Collection
- GEOcoding
- E-911 Addressing
- GIS Data Maintenance
- ESRI Authorized Training
- GPS Training



## GIS PRODUCTS

- ArcGIS Products
- Trimble Products
- GEOpowered
- ArcPad Mobile GIS
- W.A.R.N



ESRI Authorized:  
Consultant  
Reseller  
Instructor



## GEO-Jobe GIS Consulting

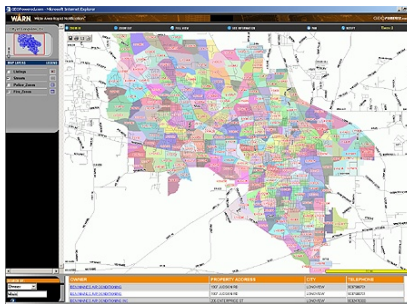
107 Music City Circle, Ste. 202  
Nashville, TN 37214

Web: <http://www.geo-jobe.com>

Phone: 615-883-0085  
Fax: 603-907-0718  
Email: [info@geo-jobe.com](mailto:info@geo-jobe.com)

## GIS in Public Safety

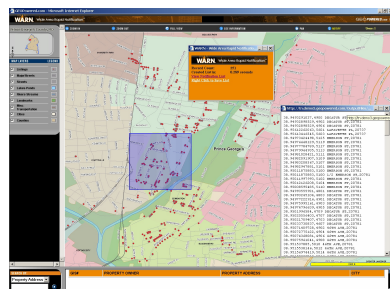
The key to Public Safety is “communication”, both within your organization and with the general public. Communication technology has advanced rapidly over the years, but recently the use of Geographic Information Systems has evolved as being a key ingredient to completing the communication loop. Providing a spatial perspective to an emergency situation has proven very beneficial in Police, Fire and E-911 applications. GEO-Jobe® GIS Consulting offers services that will assist your organization in maintaining up-to-date GIS information for these applications, such as GIS Data Conversion, GPS Data Collection, and GIS Training.



City of Longview, TX

With “communication” in mind GEO-Jobe® GIS Consulting partnered with W.A.R.N (Wide Area Rapid Notification) to develop a Geographic Mass Notification System. The W.A.R.N product gives the user the ability to geographically draw an area on a map and spawn mass emergency notifications based on that location, calling up to 6,000 phone numbers in that area . Emergency situations such as chemical, severe weather, missing children and homeland security to name a few.

For more information on GIS Solutions for Public Safety or to schedule a demonstration with one of our project managers please contact us at 615-883-0085 or email us at [info@geo-jobe.com](mailto:info@geo-jobe.com).



Prince George's County, MD

## W.A.R.N. System Process

